

**Adelaide
Botanic
High School**
Tomorrow
— Today



2023 annual report to the
Community

Adelaide Botanic High School

Adelaide Botanic High School number: 1919

Partnership: Adelaide - Prospect

School principal:

Alistair Brown



Signature

Date of endorsement:

05/02/2024



Context Statement

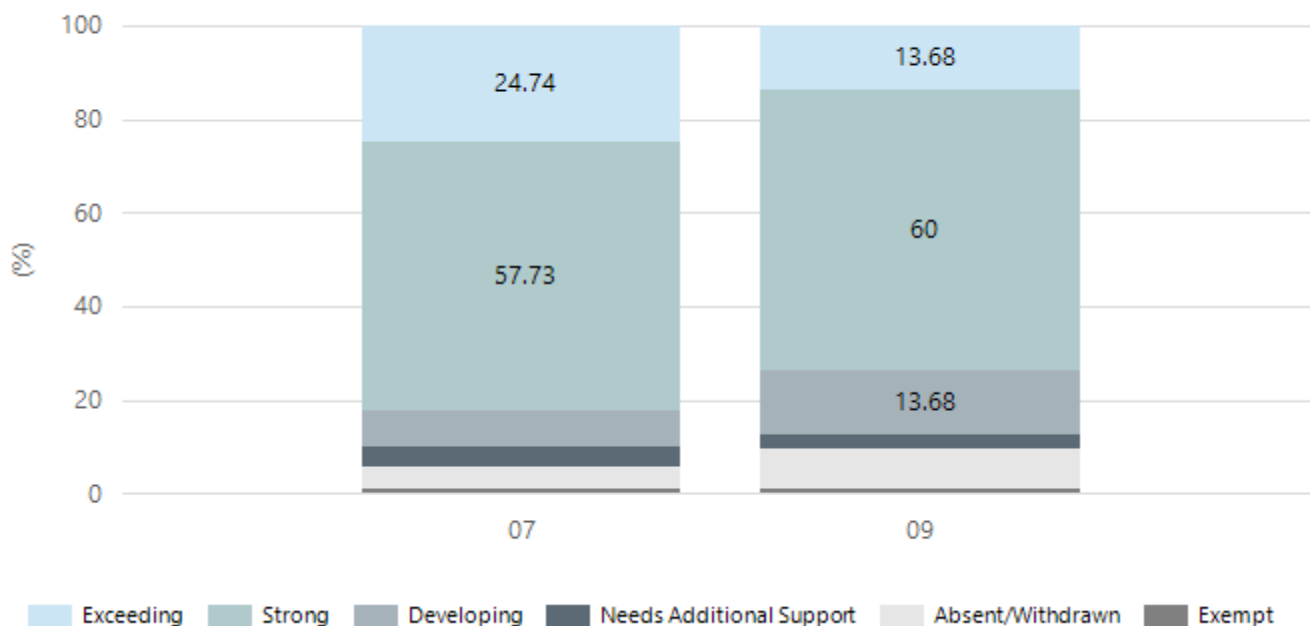
Adelaide Botanic High School caters for students from 7-12. At the time of this report, the enrolment in 2023 is 1151. Adelaide Botanic High School is classified as Category 7 on the Department for Education Index of Educational Disadvantage. At the time of this report, the school population includes 4% Aboriginal students, 17% students with disabilities, 6% students with English as an additional language or dialect (EALD) funded background, 1% children/young people in care. Further information about the school is available on the school's website (including its context statement), as well as the My School website.

Performance Summary

NAPLAN Proficiency

In 2023, the Australian Curriculum, Assessment and Reporting Authority (ACARA) - a Commonwealth Independent statutory authority - announced changes to NAPLAN performance reporting. This new way of reporting by ACARA that NAPLAN results from 2023 will not be comparable to previous years. The new approach replaces the previous numerical NAPLAN bands and the national minimum standard.

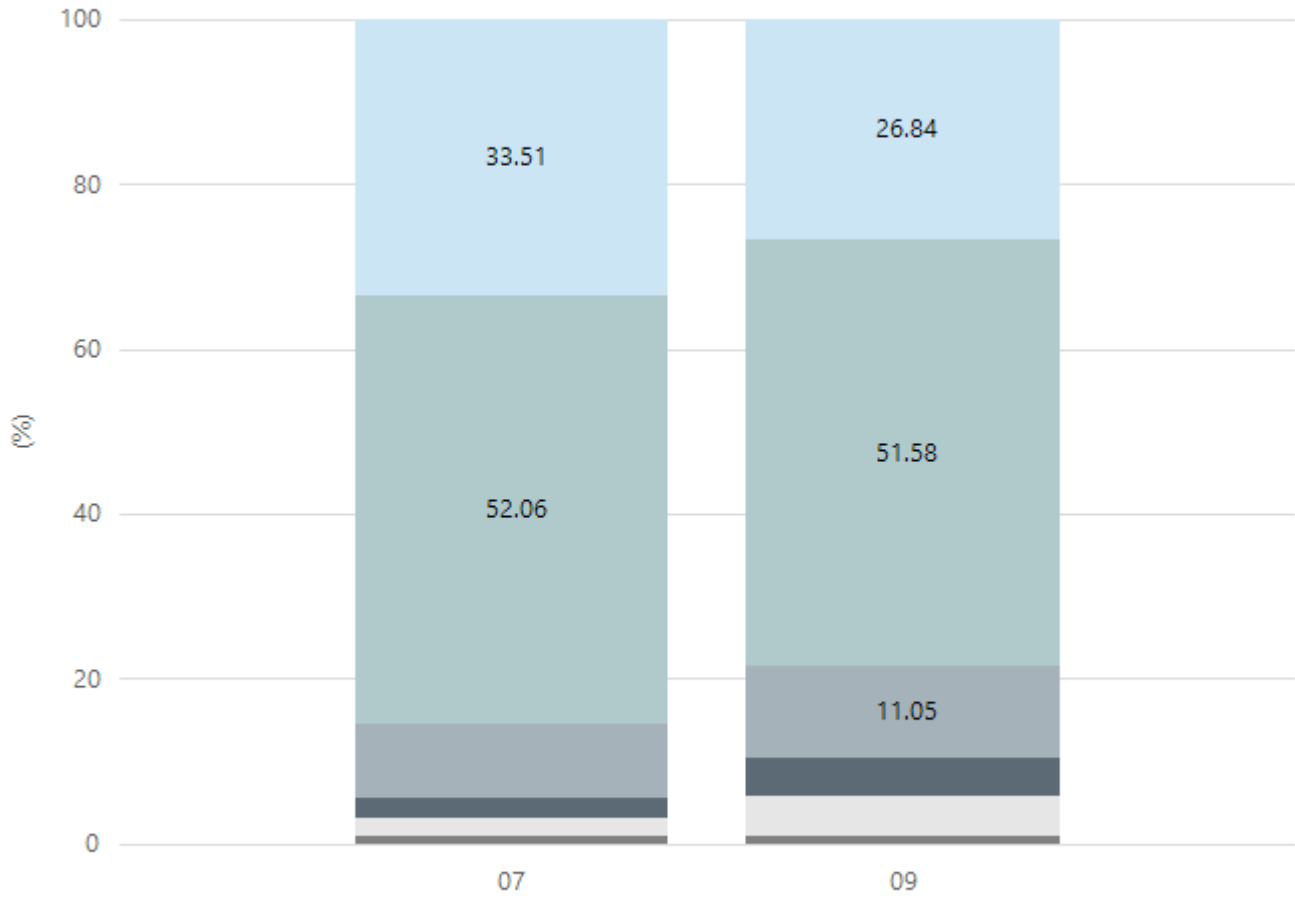
Numeracy



Year Level	07	09
Exceeding	48	26
Strong	112	114
Developing	15	26
Needs Additional Support	8	6
Absent/Withdrawn	9	16
Exempt	2	2
Total	194	190

Data Source: Department for Education Assessment Data Holdings, 2023. When there are less than six students in a cohort, no data is supplied.

Reading

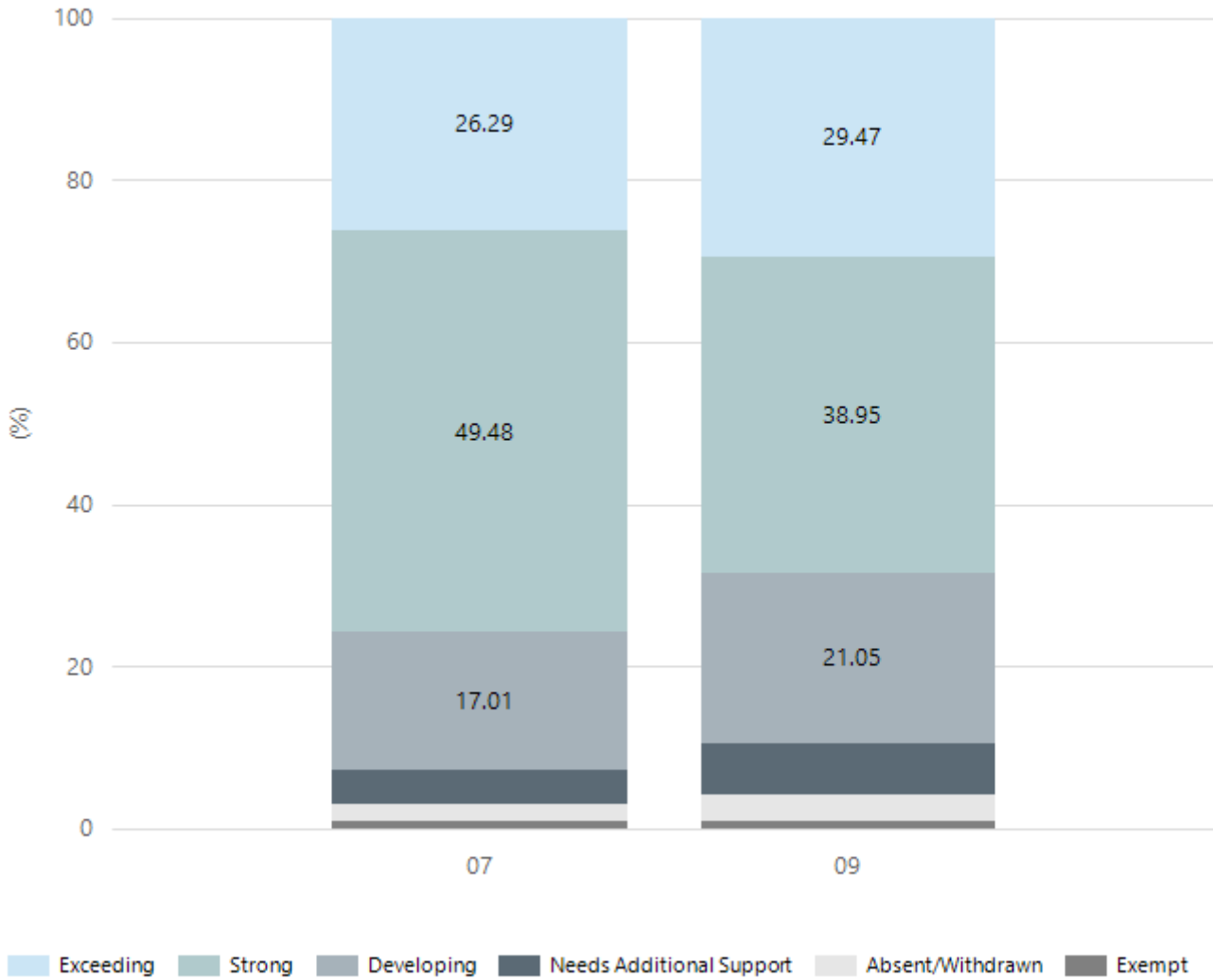


Exceeding Strong Developing Needs Additional Support Absent/Withdrawn Exempt

Year Level	07	09
Exceeding	65	51
Strong	101	98
Developing	17	21
Needs Additional Support	5	9
Absent/Withdrawn	4	9
Exempt	2	2
Total	194	190

Data Source: Department for Education Assessment Data Holdings, 2023. When there are less than six students in a cohort, no data is supplied.

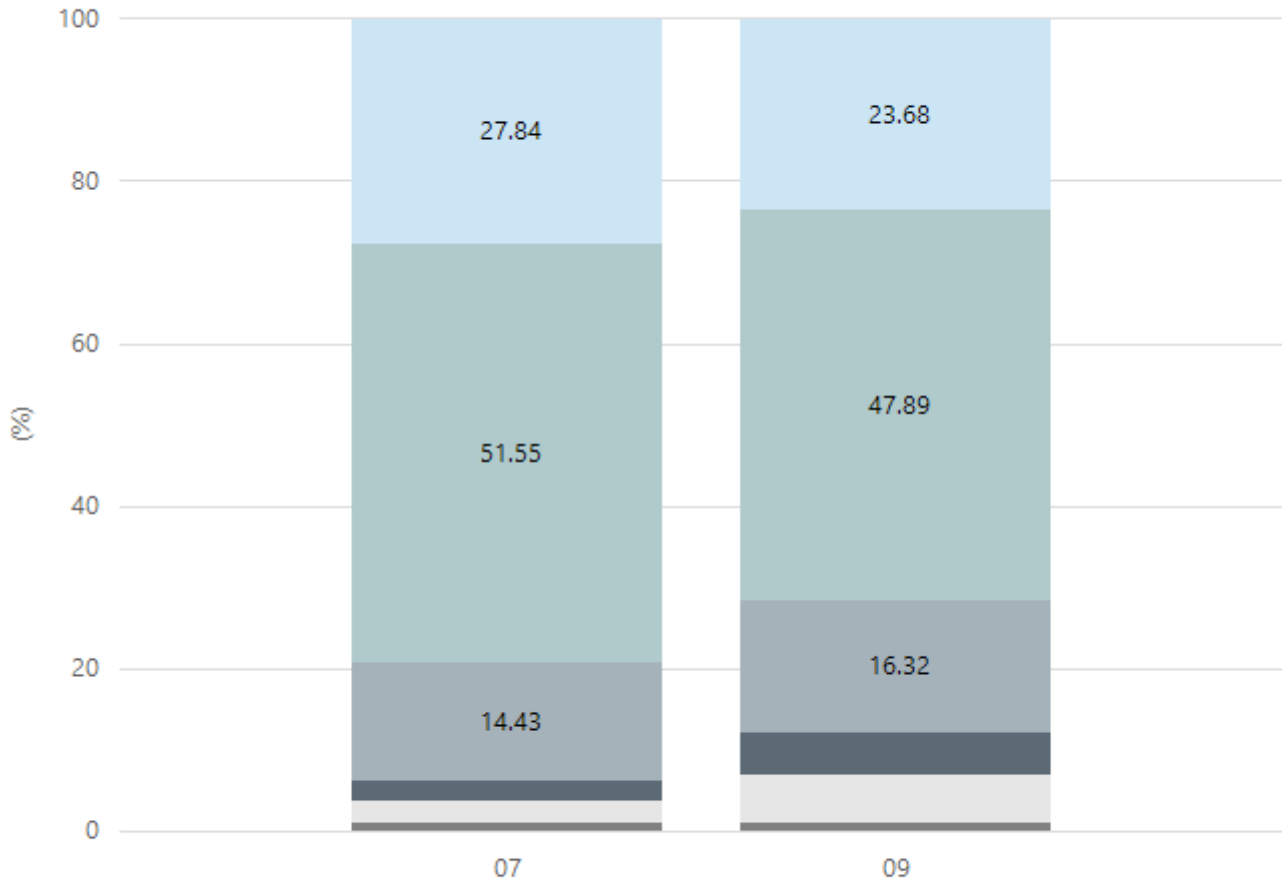
Writing



Year Level	07	09
Exceeding	51	56
Strong	96	74
Developing	33	40
Needs Additional Support	8	12
Absent/Withdrawn	4	6
Exempt	2	2
Total	194	190

Data Source: Department for Education Assessment Data Holdings, 2023.
 When there are less than six students in a cohort, no data is supplied.

Grammar

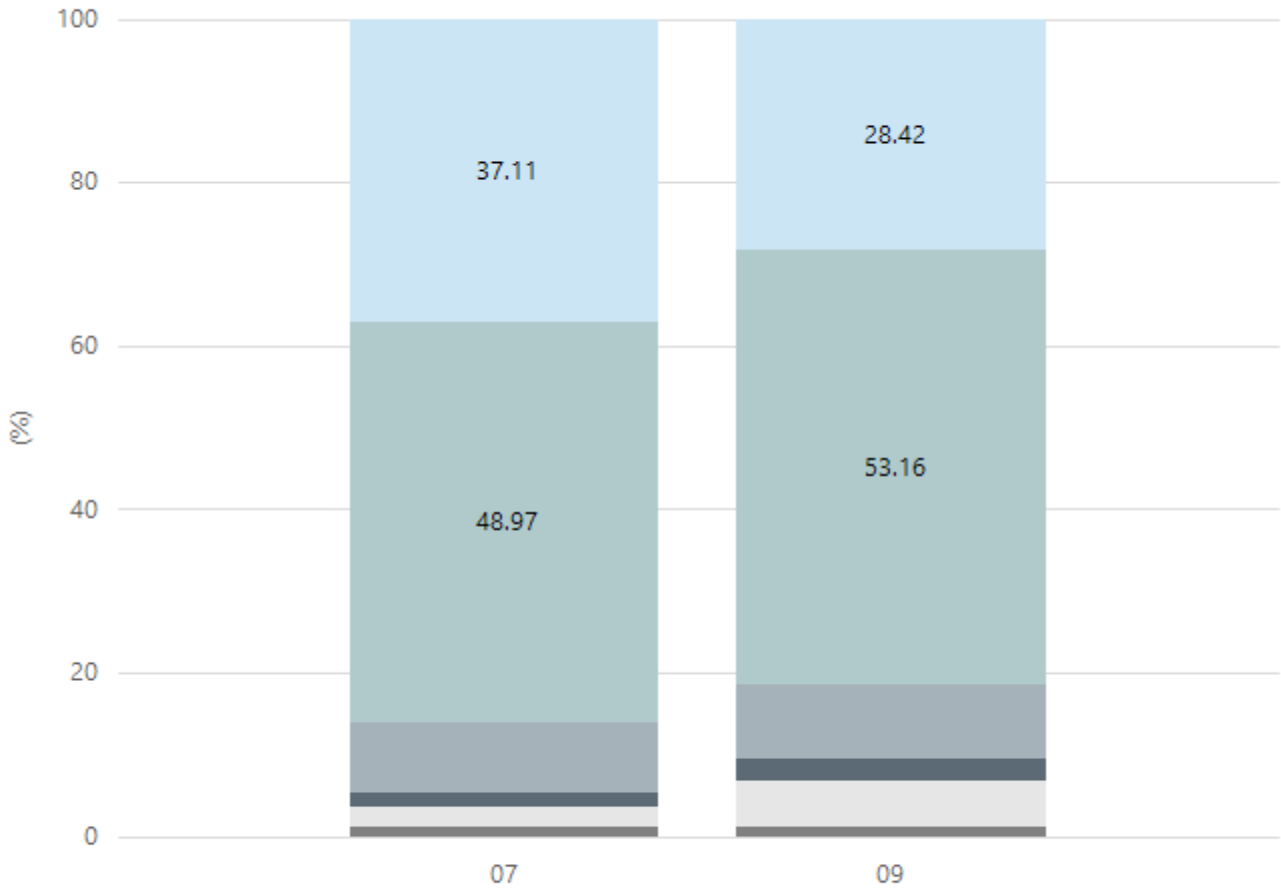


Exceeding Strong Developing Needs Additional Support Absent/Withdrawn Exempt

Year Level	07	09
Exceeding	54	45
Strong	100	91
Developing	28	31
Needs Additional Support	5	10
Absent/Withdrawn	5	11
Exempt	2	2
Total	194	190

Data Source: Department for Education Assessment Data Holdings, 2023. When there are less than six students in a cohort, no data is supplied.

Spelling



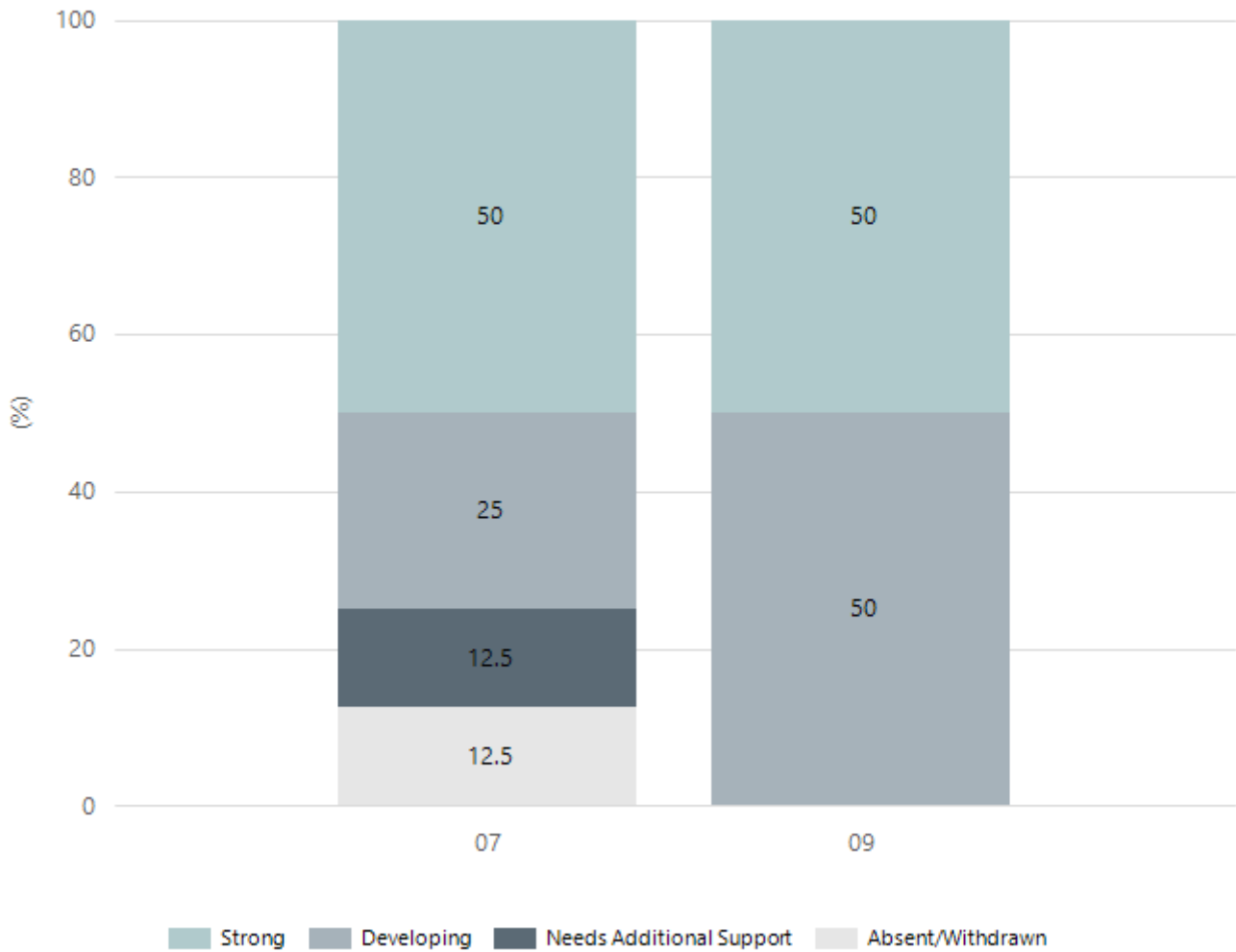
■ Exceeding
 ■ Strong
 ■ Developing
 ■ Needs Additional Support
 ■ Absent/Withdrawn
 ■ Exempt

Year Level	07	09
Exceeding	72	54
Strong	95	101
Developing	17	17
Needs Additional Support	3	5
Absent/Withdrawn	5	11
Exempt	2	2
Total	194	190

Data Source: Department for Education Assessment Data Holdings, 2023. When there are less than six students in a cohort, no data is supplied.

NAPLAN Proficiency - Aboriginal Learners

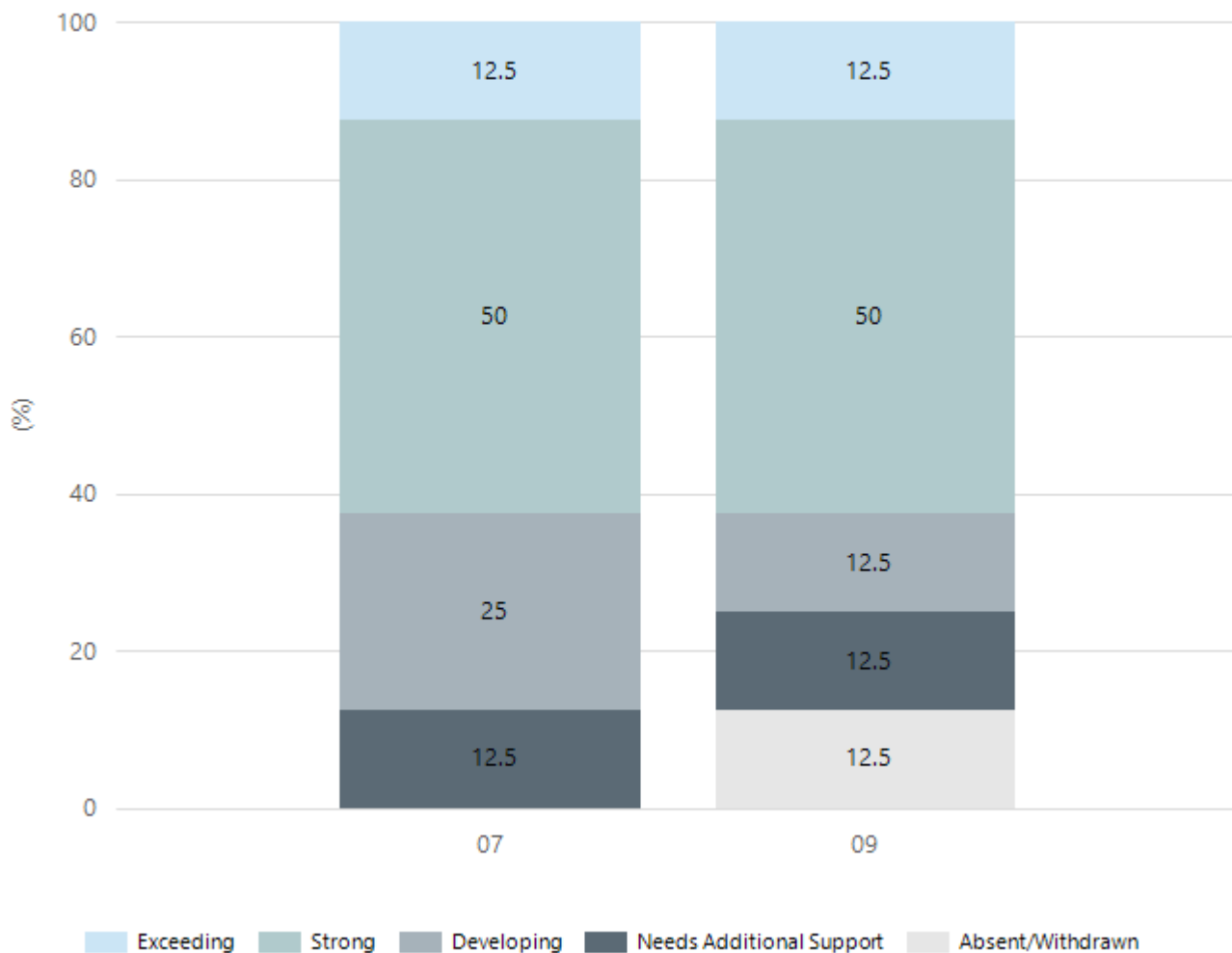
Numeracy



Year Level	07	09
Strong	4	4
Developing	2	4
Needs Additional Support	1	
Absent/Withdrawn	1	
Total	8	8

Data Source: Department for Education Assessment Data Holdings, 2023. When there are less than six students in a cohort, no data is supplied. Only data for Aboriginal learners is displayed.

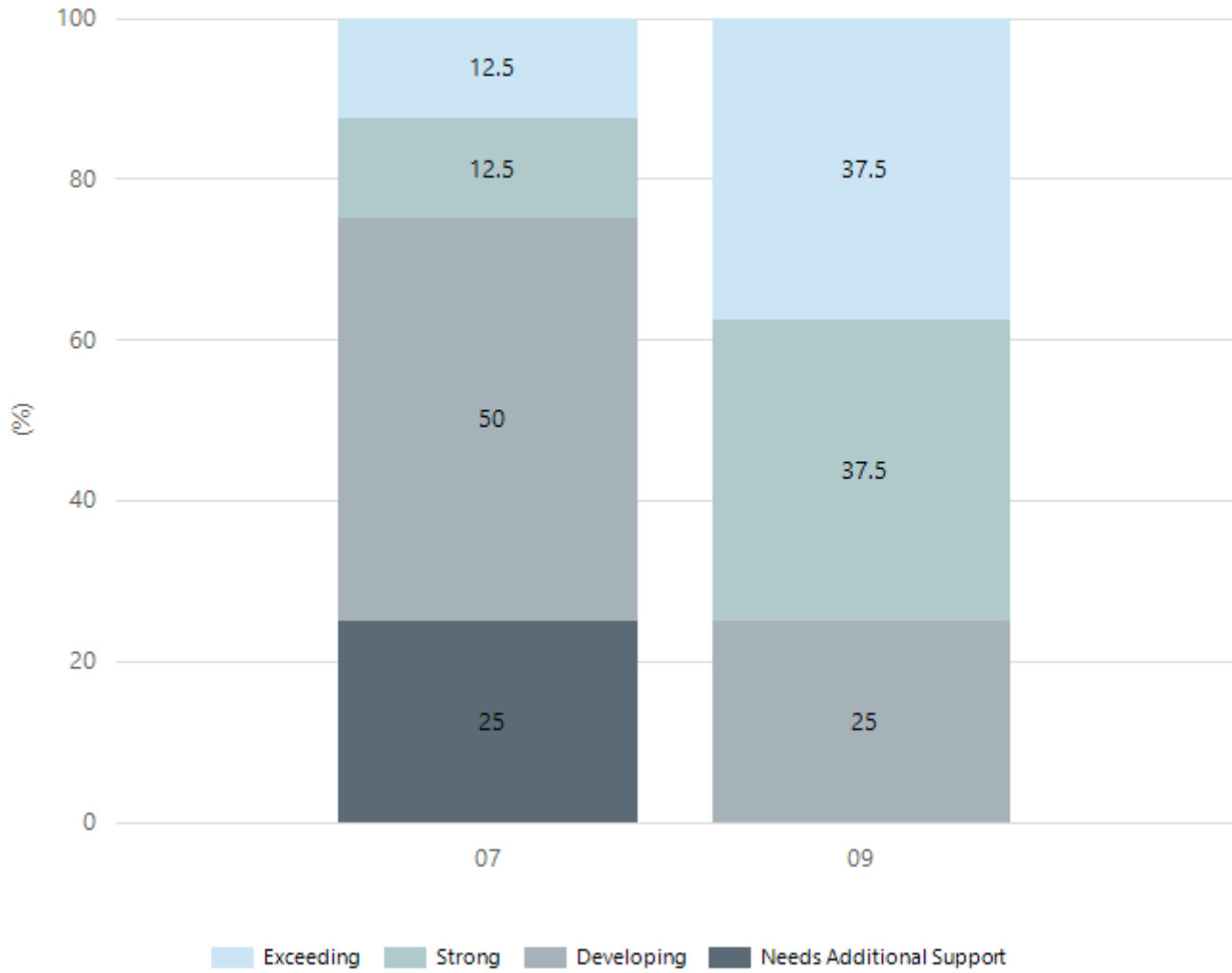
Reading



Year Level	07	09
Exceeding	1	1
Strong	4	4
Developing	2	1
Needs Additional Support	1	1
Absent/Withdrawn		1
Total	8	8

Data Source: Department for Education Assessment Data Holdings, 2023. When there are less than six students in a cohort, no data is supplied. Only data for Aboriginal learners is displayed.

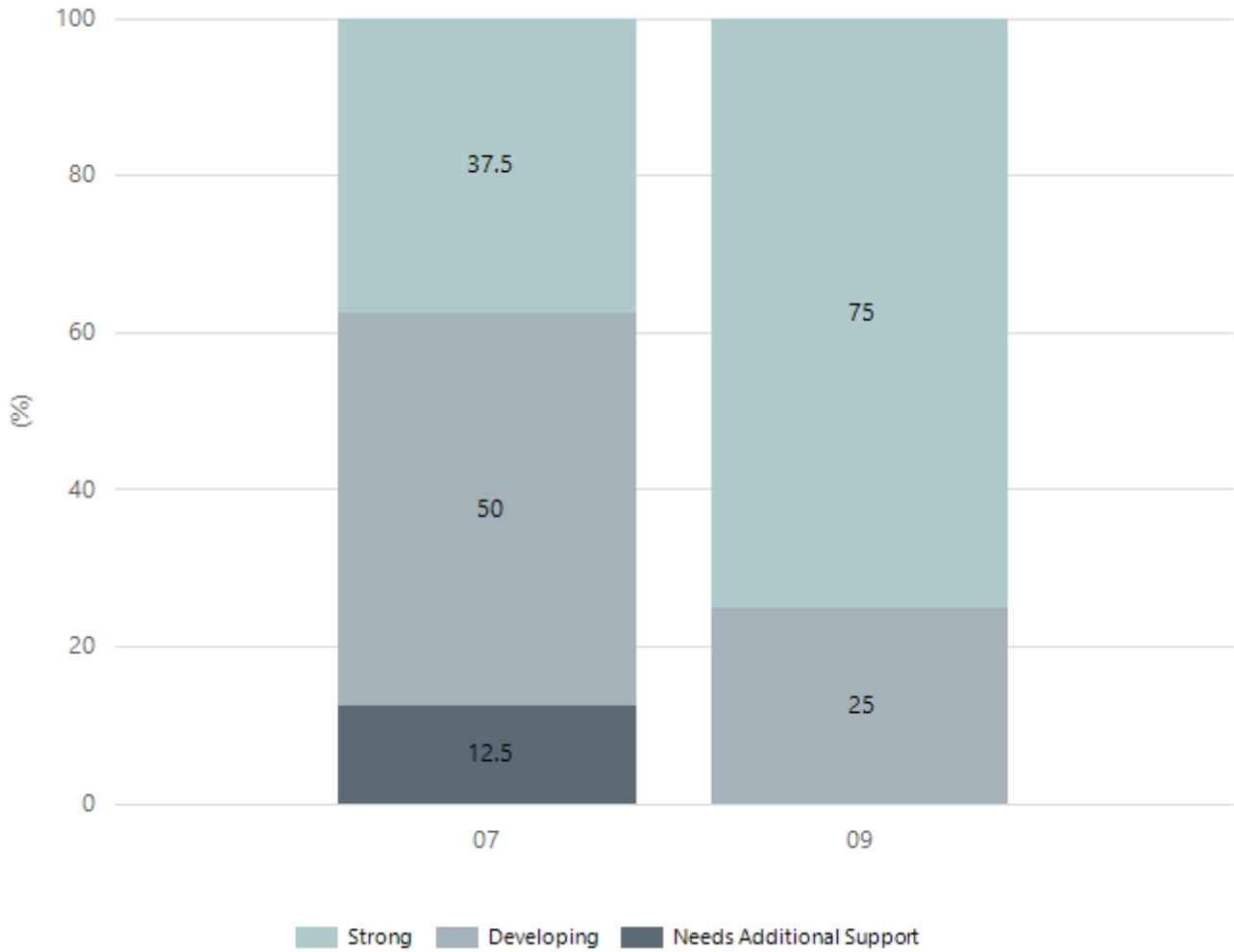
Writing



Year Level	07	09
Exceeding	1	3
Strong	1	3
Developing	4	2
Needs Additional Support	2	
Total	8	8

Data Source: Department for Education Assessment Data Holdings, 2023.
 When there are less than six students in a cohort, no data is supplied. Only data for Aboriginal learners is displayed.

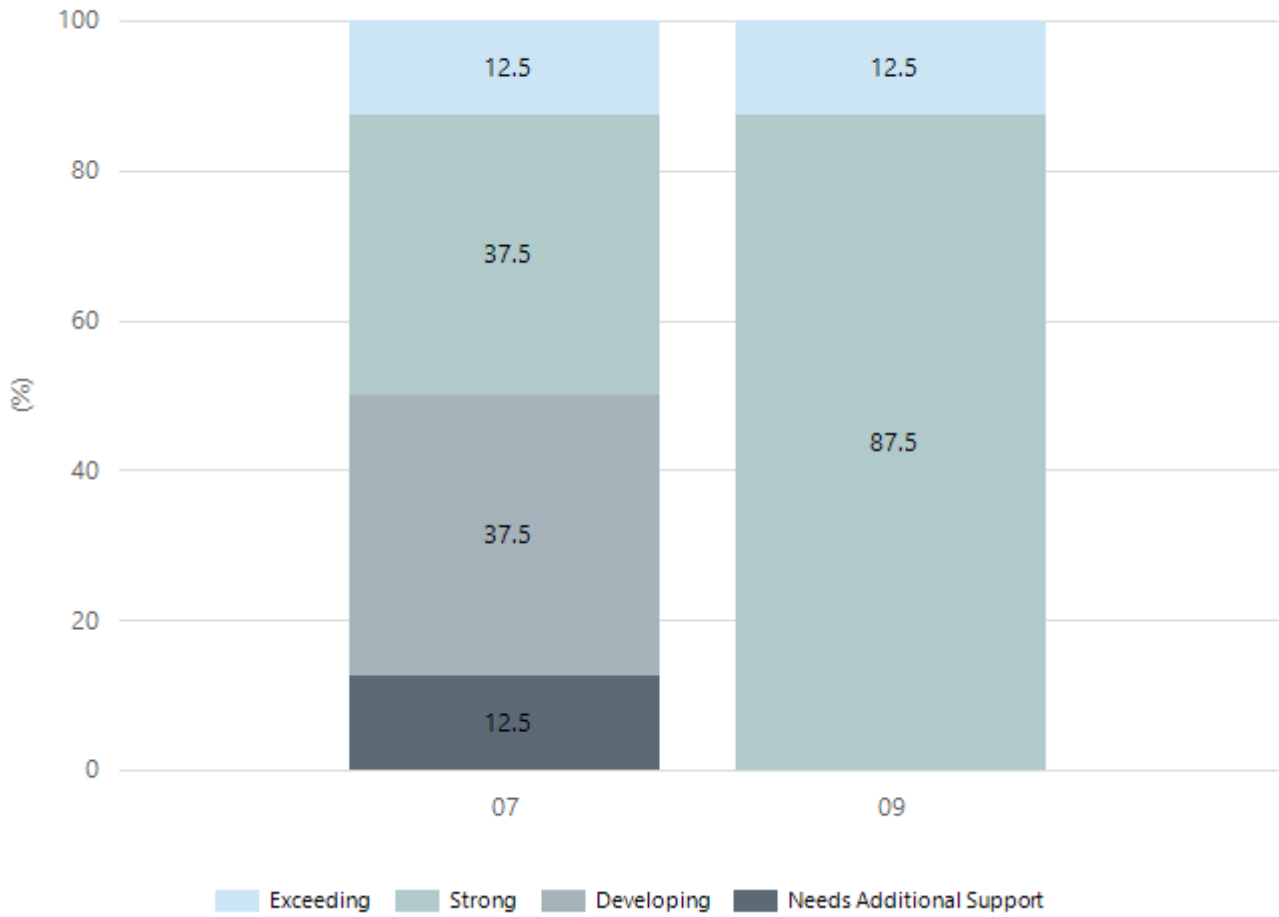
Grammar



Year Level	07	09
Strong	3	6
Developing	4	2
Needs Additional Support	1	
Total	8	8

Data Source: Department for Education Assessment Data Holdings, 2023.
 When there are less than six students in a cohort, no data is supplied. Only data for Aboriginal learners is displayed.

Spelling



Year Level	07	09
Exceeding	1	1
Strong	3	7
Developing	3	
Needs Additional Support	1	
Total	8	8

Data Source: Department for Education Assessment Data Holdings, 2023. When there are less than six students in a cohort, no data is supplied. Only data for Aboriginal learners is displayed.

South Australian Certificate of Education - SACE

SACE Stage 2 Grades - Percentage of grades that are C- or above for attempted SACE subjects (SEA)

2021	2022	2023
92%	93%	99.5%

Data Source: SACE School Data Reports, as of February 2023 for 2020-2022. 2023 SACE results are School supplied data. When there are less than six students, no data is supplied. Due to rounding of percentages, total results may not add up to 100%.

SACE Stage 2 Grade Distribution

Grade	2021	2022	2023
A+	9%	7%	6%
A	14%	14%	11%
A-	7%	9%	14%
B+	14%	11%	16%
B	13%	16%	12%
B-	8%	12%	15%
C+	7%	11%	11%
C	19%	9%	11%
C-	1%	4%	4%
D+		2%	0.2%
D		1%	0%
E+		0%	0%

Data Source: SACE School Data Reports, as of February 2023 for 2020-2022. 2023 SACE results are School supplied data. When there are less than six students, no data is supplied. Due to rounding of percentages, total results may not add up to 100%.

SACE Completion – Percentage of completers out of those students who had the potential to complete their SACE in October that year

2021	2022	2023
	97%	100%

Data Source: SACE School Data Reports, as of February 2023 for 2020-2022. 2023 SACE results are School supplied data. When there are less than six students, no data is supplied. Due to rounding of percentages, total results may not add up to 100%.

Year 12 Students undertaking Vocational or Trade Training (VET)

	2021	2022	2023
Percentage of Year 12 students undertaking Vocational Training or Trade Training			18.4%
Percentage of Year 12 students attaining a Year 12 certificate or equivalent VET qualification			23.37%

Data Source: School supplied data

School Attendance

Year Level	2021	2022	2023
Year 07		88.8%	92.3%
Year 08	92.1%	89.4%	89.6%
Year 09	89.8%	85.1%	88.3%
Year 10	89.9%	87.0%	89.2%
Year 11	91.7%	87.1%	88.9%
Year 12		86.8%	86.7%
Total	90.9%	87.4%	89.2%

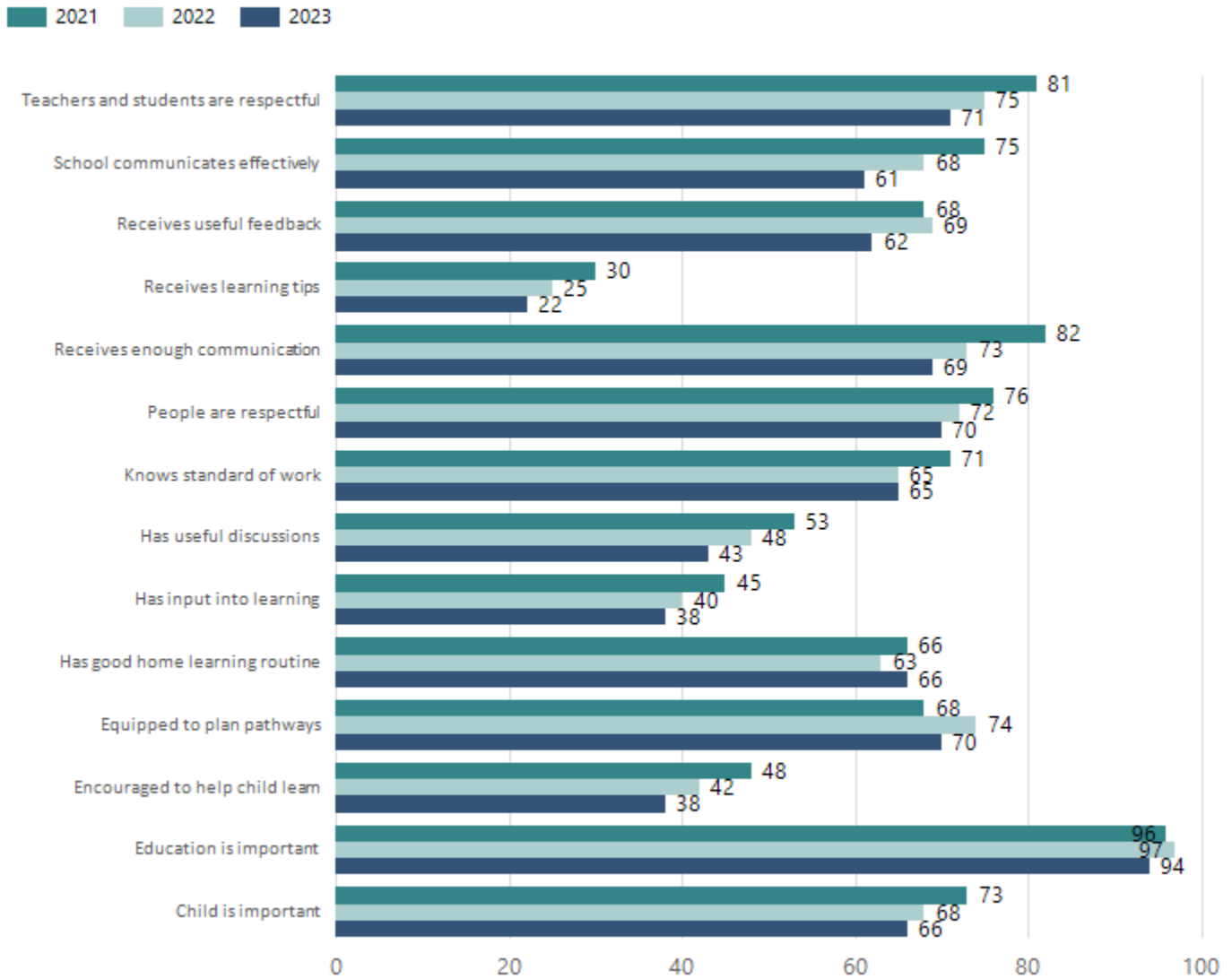
Data Source: Department for Education Attendance Data, Semester 1 Report 2023. A blank cell indicates there we no students enrolled. 'Primary Other' includes students enrolled in specialised education options. 'Secondary Other' includes students who have already spent a year at Year 12 and elected to undertake further study at Year 12.

Attendance Comment

In South Australia, all children and young people must be in school from 6 years to 16 years old. They must attend a government or non-government school full time. From age 16 to 17 however, young people must attend school or an approved learning program (such as an apprenticeship, traineeship, accredited course or university). Schools and parents must encourage and support students to come to school every day. Parents and caregivers must make sure their child is enrolled in a school, and attends school all day and everyday it is open, unless a child is sick or has an approved exemption. Teachers and leaders actively follow up when a student misses school, including recording all absences and non-attendance. All schools in South Australia have local attendance procedures governed under the Education and Children's Services Regulations 2020.

Parent Opinion Survey Results

Proportion of agree/strongly agree response(%)



Data Source: 2023 Department for Education Parent Opinions Survey, Term 3 2023.

Intended Destination

Leave Reason	Number	%
NG - ATTENDING NON-GOV SCHOOL IN SA	9	26.0%
OV - LEFT SA FOR OVERSEAS	2	6.0%
PE - PAID EMPLOYMENT IN SA	2	6.0%
SM - SEEKING EMPLOYMENT IN SA	2	6.0%
TG - TRANSFERRED TO SA GOVERNMENT SCHOOL	15	43.0%

Data Source: Department for Education Destination Data Report, 2023. Data extract term 3 2023. Data shows recorded destinations for students that left the school in the previous year. Data is uploaded by schools in term 3 and may not reflect final or total figures at time of report creation.

Highest Qualifications held by the teaching workforce and workforce composition

All teachers at this school are qualified and registered with the SA Teachers Registration Board.

Qualification Level	Number of Qualifications
Bachelor's degrees or Diplomas	36
Postgraduate Qualifications	57

Data Source: Data extracted from Mandatory Workforce Information Collections as on the last pay date of June 2023. As self-reported by staff in the system.

Please note: Data includes staff who are Actively employed and on extended paid leave. Please note only the highest qualification of the Teaching staff is reported. Excludes any number of other certifications earned.

Workforce composition including indigenous staff

	Non-Teaching Staff		Teaching Staff	
	Indigenous	Non-Indigenous	Indigenous	Non-Indigenous
Full-Time Equivalents	0.0	24.4	1.0	84.2
Persons	0.0	27.0	1.0	92.0

Data Source: Data extracted from Mandatory Workforce Information Collection as on the last pay date of June 2023.

Please note: Data includes staff who are actively employed and on extended paid leave. "Indigenous category" is self-reported by staff in the system.

Financial Statement

Funding Source	Amount
Grants: State	\$14,336,612.04
Grants: Commonwealth	\$31,168
Parent Contributions	\$1,838,191.52
Fund Raising	\$6,445.92
Other	\$127,757.21

Data Source: School supplied data.